

Liberty Platinum Sound System Owners Manual



A Message from the President

Congratulations on purchasing an Anchor Audio sound system, the choice of thousands of satisfied customers including the White House, prestigious universities, school districts nationwide, police and fire departments, and all branches of the U.S. military. Our products are made of the finest materials and built with pride in the U.S.

We've incorporated the latest technology into your sound system yet kept it simple to use. Just take a few minutes to review this manual to ensure the maximum enjoyment of your Anchor system. Or, you can view a demonstration video complete with a trouble shooting section at www.anchoraudio.com.

Feel free to call our friendly customer support staff at 1-800-ANCHOR1 Monday thru Friday between 7:00am and 5:00pm Pacific Standard Time with any questions. We love to hear from our customers.

Janet Jacobs, President
on behalf of all Anchor employees

CONTENTS

GETTING STARTED / WARRANTY INFORMATION	1
BASIC SYSTEM OPERATION / LINE ARRAY TOWER	2
CONNECTING MULTIPLE SOUND SYSTEMS.....	3
USING THE BUILT-IN MP3 OR CD PLAYER/ OPERATING THE BUILT-IN UHF WIRELESS RECEIVER...	4
OPERATING THE WIRELESS MICROPHONE / TRANSMITTER	5
CARING FOR YOUR BATTERY	6
HAVING TROUBLE WITH YOUR SOUND SYSTEM? / TECHNICAL SPECIFICATIONS.....	8

GETTING STARTED

Please check your new unit carefully for any damage which may have occurred during shipment. Each Anchor product is carefully inspected at the factory and packed in specially designed boxes for safe transport.

Notify the freight carrier immediately of any damage to the shipping box or product. Repack the unit in the original box and wait for inspection by the carrier's claim agent. Notify your dealer of the pending freight claim.

NOTE: All damage claims must be made with freight carrier!

RETURNING SYSTEMS FOR SERVICE OR REPAIR

For service or repair, please contact the dealer you purchased your system from or Anchor Audio Customer Service at 800.262.4671 to obtain a RA (*Return Authorization*) number. You may also complete an online RA request form at www.anchoraudio.com. All shipments to Anchor Audio must include a RA number and must be shipped prepaid. C.O.D. shipments will be refused and returned at your expense.

IMPORTANT: Save the shipping box & packing materials, they were specially designed to ship your unit!

100-0193-000 rev. A



SIX YEAR WARRANTY

BASIC SYSTEM OPERATION

NOTE: Fully Charge Batteries Before First Use!

1. Set all Input Levels to minimum & Tone Controls to flat (*middle*) setting
2. Plug wired microphone into the MIC 1 or MIC 2 jacks and/or any audio source into the LINE-IN jacks
3. Switch POWER to ON, Power ON LED will light
4. Slowly increase Level Controls for active Input Jacks to desired volume
5. Adjust Tone Controls for desired sound quality

IMPORTANT: Make all connections with shielded cables to avoid hum, buzzing or interference.



BACK PANEL OF LIB-7500C
with optional CD option installed

CD PLAYER CONTROLS

BACK PANEL OF LIB-7500MU2

LINE IN – INPUT JACKS

1/8" (3.5 mm) jack is used to hook up a portable CD,iPOD,Laptop or other external audio source.
The 1/4" unbalanced and dual RCA Inputs can be used to daisy-chain multiple Liberty speakers.

WIRELESS RECEIVER CONTROLS

UNIVERSAL MIC – INPUT JACKS

Balanced XLR – low impedance, for balanced mic, powers condenser-type microphones.
Unbalanced 1/4" – high impedance, for unbalanced microphones, no phantom power.

USB DC OUT - 5V 500mA

To charge/power external device

DC OUT - 12V 500mA

To charge/power external device

AC POWER CORD INLET

POWER SWITCH

MP3 PLAYER CONTROLS

MP3 VOLUME/LINE IN LEVEL CONTROL

TONE CONTROLS

BASS/TREBLE

LINE OUT – OUTPUT JACK

Balanced 1/4" and dual RCA provide a combined output of all active system inputs.
Record your presentation or connect to another powered sound system.

MIC LEVEL CONTROLS

VOICE OVER BUTTON

ON - Button In / Off - Button Out

CHARGE STATUS LEDS (AC/DC Only)

GREEN: Charge Complete
AMBER: Nearly Complete
RED: Charging has Begun

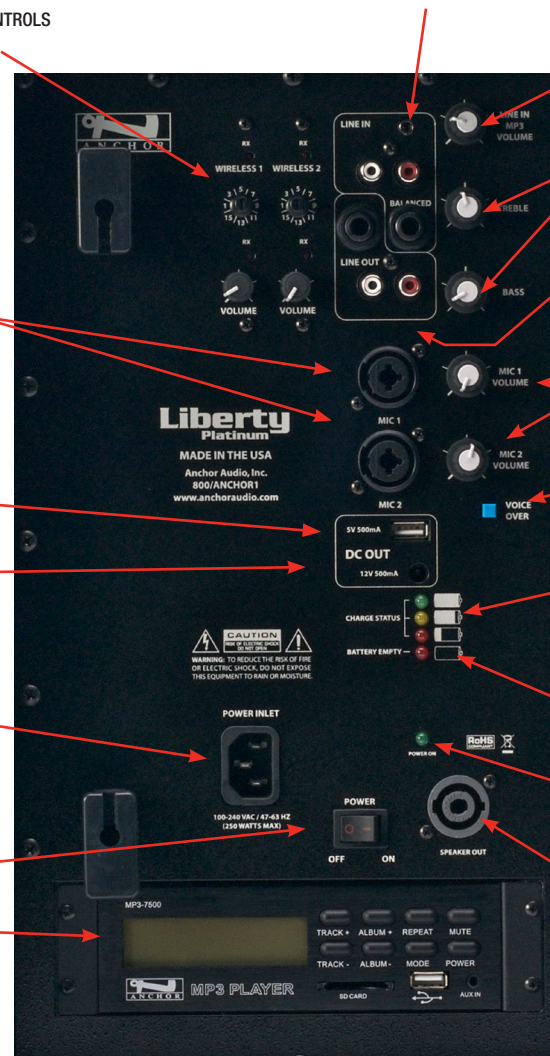
BATTERY EMPTY LED (AC/DC Only)

RED: Charge Battery Immediately

POWER ON LED

GREEN:
Power On

SPEAKON OUTPUT JACK





SIX YEAR WARRANTY

CONNECTING MULTIPLE SOUND SYSTEMS

UNPOWERED COMPANION SPEAKER

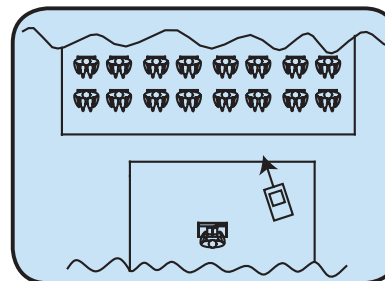
One powered Liberty sound system and one unpowered Liberty companion speaker. Using a speaker cable (*SC-50NL*) connect the **SPEAKER OUTPUT** jack on the powered system to the **IN** jack on the unpowered speaker.

NOTE: AC power is not required for an unpowered companion speaker.

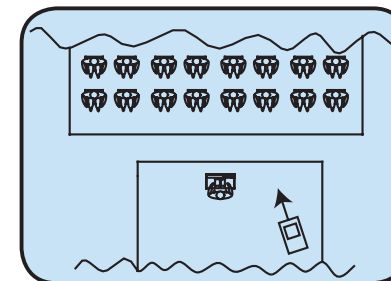
POWERED SOUND SYSTEMS

Two or more powered Liberty Sound Systems. Using a speaker cable (*EX-50PP*) connect the **LINE OUT** jack on the first powered Liberty to the **LINE IN** jack on the second powered Liberty. Set second Liberty volume to maximum so full volume control will be at the first or primary sound system.

CORRECT SYSTEM PLACEMENT



WRONG SYSTEM PLACEMENT



CONTROLLING FEEDBACK

Feedback, a howling noise or shrill sound, is self-generated by the sound system. It's caused by a microphone picking up the sound coming from the speaker and then re-amplifying it. Once a feedback loop starts, it continues until the system is adjusted.

FEEDBACK CAUSES

- Microphone too close, pointing towards or in front of speaker
- Volume setting is too loud for room
- Sound reflecting off hard surfaces

AVOIDING & ELIMINATING FEEDBACK

- Point microphone in a different direction
- Keep microphone away from the speaker
- Place speaker in **FRONT** of the microphone
- Reduce the sound system volume levels

CAUTION: Feedback can damage your equipment & may be hazardous to hearing.

Liberty Platinum Sound System Owners Manual

MADE IN USA



SIX YEAR WARRANTY

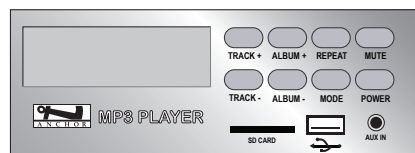
USING THE BUILT-IN MP3 PLAYER

Your MP3 player supports WMA and WAV files as well as MP3. Input slots for play are USB, SD card slot and AUX port for other music player devices.

Insert your memory card or USB stick and turn on the MP3 POWER. Push MODE button until your device is displayed. The auxiliary port becomes active when 3.5mm cable is inserted.

The LCD displays functions as used:

- POWER:** press once for ON or OFF
MODE: displays mode of operation
MUTE: press once for mute ON and again to mute OFF
RPT: press and release to repeat song
TRACK+: press and release to next track
TRACK-: press and release for previous track
ALBUM+: press and release for next album or hold and release until correct album is found
ALBUM-: press and release for previous album or hold and release until correct album is found



EXTERNAL ACCESSORY
VOLUME CONTROL

USING THE BUILT-IN CD PLAYER

Your CD player supports CD, CD-R, CD-R/W and MP3.

The LCD displays functions as used:

- PLAY/PAUSE:** press once for PLAY or PAUSE
STOP: press once for STOP
CUE: press for the next track
REV: press for the previous track
FOLDER>>: press for the next folder
FOLDER<<: press for the previous folder
REPEAT: press to repeat last track, press again to repeat all
EJECT: press to eject
PROG: set the programming mode



EXTERNAL ACCESSORY
VOLUME CONTROL

DIVERSITY WIRELESS BY ANCHOR AUDIO

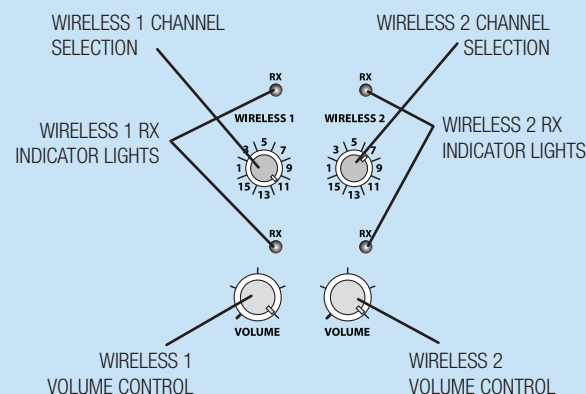
Anchor Audio UHF wireless is a 16 channel, diversity wireless system that receives signals with two independent antennae. With diversity wireless the receiver processes the stronger signal, effectively minimizing dropouts and interference from other transmitting sources. The antennae are mounted internally so there are no obstructions or risk of damage.

CHANNEL SELECTION - BUILT-IN RECEIVER

Select a channel, set the built-in receiver & microphone transmitter to that channel before using your wireless system.

1. Choose any available wireless channel/frequency from 1 thru 16
(see page 5 for transmitter instructions)
2. Set the Wireless Channel Selector Knob to the channel/frequency you choose in step 1

If you have two wireless receivers repeat above for the second receiver. Remember, each receiver/transmitter pair must be set to different channels to avoid interference.



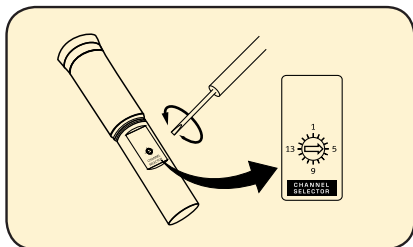
NOTE: Ongoing wireless interference? The frequency you selected may be in use by other systems in the area!
Change channels until you find a clear frequency!



OPERATING THE WIRELESS MICROPHONE/TRANSMITTER

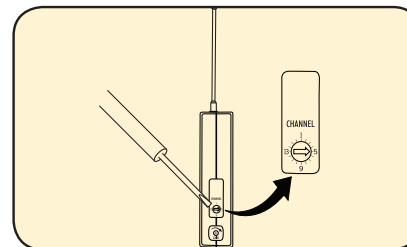
CHANNEL SELECTION - HANDHELD TRANSMITTER

1. Unscrew battery cover on bottom of microphone
2. Set the CHANNEL SELECTOR dial to match the channel setting of your receiver
3. Replace battery cover and tighten firmly



CHANNEL SELECTION - BODY-PACK TRANSMITTER

1. The channel selection dial is located on the side of the transmitter
2. Set the CHANNEL selection dial to match the channel setting of the receiver



NOTE: When using dual wireless, each microphone must be set to a different channel!

USING YOUR WIRELESS MICROPHONES

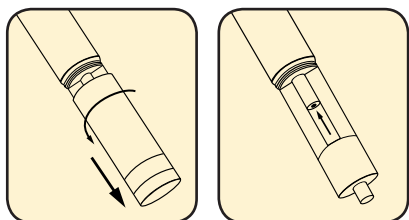
After you have set the transmitter channel (see above) you are ready to use your wireless microphone:

1. Body-pack transmitter users must insert the mic plug into the transmitter jack marked MIC
2. Push the transmitter power button for two seconds until ON (The red LED will stay on when the mic is turned on. If the red LED flashes, the battery is low)
3. Turn the Liberty power switch to ON
4. The RX indicators will light (*only one indicator will light at a time*) when the wireless signal is being transmitted and received

CAUTION: Harmful feedback may occur when walking in front of a sound system or speaker with a wireless microphone. Always point microphone away from speakers!

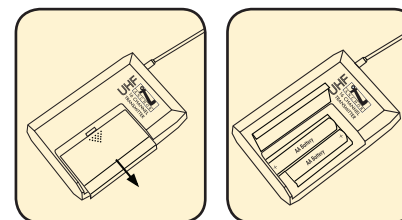
REPLACE BATTERY - HANDHELD TRANSMITTER

1. Unscrew battery cover on bottom of microphone
2. Replace old batteries with two fresh size 'AA' alkaline batteries
3. Replace battery cover and tighten firmly



REPLACE BATTERY - BODY-PACK TRANSMITTER

1. Slide open battery cover on front of transmitter
2. Replace old batteries with two fresh size 'AA' alkaline batteries
3. Replace battery cover by sliding firmly into place



NOTE: Transmitter power must be OFF when changing batteries!

For System Setup & Operation Videos Visit Our Website: www.anchoraudio.com



SIX YEAR WARRANTY

BATTERY REPLACEMENT (AC/DC Models only)

The batteries must be replaced every 2 – 3 years depending on usage over time. Call Anchor Audio at 800.262.4671 to order batteries.

To replace your batteries you will need a Phillips screwdriver and follow these procedures:

1. Be sure the power switch is in the OFF position
2. Remove the screws in the lower cover panel of the Liberty
3. Gently slide the cover panel with the battery tray out of the case
4. Unclip each battery connection cable and remove the batteries from the tray
5. Connect each new battery to the connection cable, attach plate to the tray and slide the tray into the Beacon
6. Replace each screw in the cover panel

SYSTEM STORAGE & BATTERIES

Fully charge batteries before storage. For extended periods of storage either leave system plugged into an AC outlet or charge the system at least once each month for a minimum of 24 hours.



BATTERY COMPARTMENT

BUILT-IN BATTERY MAINTENANCE

To preserve battery life the built-in batteries **MUST** be **FULLY** charged before the first use. Regardless of length of operation, it is recommended that batteries be fully charged as soon as possible after each use.

AC OPERATION & BATTERY CHARGING

Liberty Sound Systems include an automatic charging system designed to properly charge and maintain the systems built-in batteries. To charge batteries plug the system into an AC outlet and operate as normal while built-in batteries are charging. The CHARGE STATUS LED will light when charging. Bright red indicates charge process has begun. Amber indicates the charge process is almost complete, and green indicates full battery. It takes approximately 7 hours to charge the completely drained Beacon batteries.

BATTERY SERVICE TIME

Fully charged batteries will yield approximately 6 – 8 hours of continuous music at medium volume level (*2 – 4 hours at full volume or longer for speech only*). However, service times vary depending on control settings and use of accessories.

Waste electrical and electronic products must not be disposed of with household waste. Please recycle where facilities exist. Check with your Local Authority or Retailer for recycling advice.



NOTE: System Can Be Used During Charging!



SIX YEAR WARRANTY

Important Safety Instructions

- 1) Read Instructions – All the safety and operation instructions should be read before the product is operated.
- 2) Retain Instructions – The safety and operating instructions should be retained for future reference.
- 3) Heed Warnings- All warnings on the product and in the operating instructions should be adhered to.
- 4) Follow Instructions – All operating and use instructions should be followed.
- 5) Cleaning – Unplug this product from the wall outlet before cleaning. Do not use liquid cleaners or aerosol cleaners. Use a damp cloth for cleaning.
Exception: A product that is meant for uninterrupted service and that for some specific reason, such as the possibility of the loss of an authorization code for the CATV converter, is not intended to be unplugged by the user for cleaning or any other purpose, may exclude the reference to unplugging the product in the cleaning description otherwise in above 5).
- 6) Attachments – Do not use attachments not recommended by the product manufacturer as they may cause hazards.
- 7) Water and Moisture – Do not use this product near water – for example, near a bath tub, wash bowl, kitchen sink, or laundry tub; in a wet basement; or near a swimming pool; and the like.
- 8) Accessories – Do not place this product on an unstable cart, stand, tripod, bracket, or table. The product may fall, causing serious injury to a child or adult, and serious damage to the product. Use only with a cart, stand, tripod, bracket, or table recommended by the manufacturer, or sold with the product. Any mounting of the product should follow the manufacturer's instructions, and should use a mounting accessory recommended by the manufacturer.
- 9) A product and cart combination should be moved with care. Quick stop, excessive force, and uneven surfaces may cause the product and cart combination to overturn.
- 10) Ventilation – Slots and openings in the cabinet are provided for ventilation and to ensure reliable operation of the product and to protect it from overheating, and these openings must not be blocked or covered. The openings should never be blocked by placing the product on a bed, sofa, rug, or other similar surface. This product should not be placed in a build-in installation such as a bookcase or rack unless proper ventilation is provided or the manufacturer's instructions have been adhered to.
- 11) Power Sources – This product should be operated only from the type of power source indicated on the marking label. If you are not sure of the type of power supply to your home, consult your product dealer or local power company. For products intended to operate from battery power, or other sources, refer to the operating instructions.
- 12) Grounding or Polarization – This product may be equipped with a polarized alternating-current line plug (a plug having one blade wider than the other). This plug will fit into the power outlet only one way. This is a safety feature. If you are unable to insert the plug fully into the outlet, try reversing the plug. If the plug should still fail to fit, contact your electrician to replace your obsolete outlet. Do not defeat the safety purpose of the polarized plug.
- 13) Power-Cord Protection – Power-supply cords should be routed so that they are not likely to be walked on or pinched by items placed upon or against them, paying particular attention to cords at plugs, convenience receptacles, and the point where they exit from the product.
- 14) Protective Attachment Plug – The product is equipped with an attachment plug having overload protection. This is a safety feature. See Instruction Manual for replacement or resetting of protective device. If replacement of the plug is required, be sure the service technician has used a replacement plug specified by the manufacturer that has the same overload protection as the original plug.
- 15) Outdoor Antenna Grounding – If an outside antenna or cable system is connected to the product, be sure the antenna or cable system is grounded so as to provide some protection against voltage surges and built-up static charges. Article 810 of the National Electrical Code, ANSI/NFPA 70, provides information with regard to proper grounding of the mast and supporting structure grounding of the lead in wire to an antenna discharge unit, size of grounding conductors, location of antenna-discharge unit, connection of grounding electrodes, and requirements for the grounding electrode. See Figure A.
- 16) Lightning – For added protection this product during lightning storm, or when it is left unattended and unused for long periods of time, unplug it from the wall outlet and disconnect the antenna or cable system. This will prevent damage to the product due to lightning and power-line surges.
- 17) Power Lines – An outside antenna system should not be located in the vicinity of overhead power lines or other electric light or power circuits, or where it can fall into such power lines or circuits. When installing an outside antenna system, extreme care should be taken to keep from touching such power lines or circuits as contact with them might be fatal.
- 18) Overloading – Do not overload wall outlets, extension cords, or integral convenience receptacles as this can result in a risk of fire or electric shock.
- 19) Object and Liquid Entry – Never push objects of any kind into this product through openings as they may touch dangerous voltage points or short-out parts that could result in a fire or electric shock. Never spill liquid of any kind on the product.
- 20) Servicing – Do not attempt to service this product yourself as opening or removing covers may expose you to dangerous voltage or other hazards. Refer all servicing to qualified service personnel.
- 21) Damage Requiring Service – Unplug this product from the wall outlet and refer servicing to qualified service personnel under the following conditions:
 - a. When the power-supply cord or plug is damaged.
 - b. If liquid has been spilled, or objects have fallen into the product.
 - c. If the product has been exposed to rain or water.
 - d. If the product does not operate normally by following the operating instructions. Adjust only those controls that are covered by the operating instructions as an improper adjustment of other controls may result in damage and will often require extensive work by a qualified technician to restore the product to its normal operation.
 - e. If the product has been dropped or damaged in any way.
 - f. When the product exhibits a distinct change in performance – this indicates a need for service.
- 22) Replacement Parts – When replacement parts are required, be sure the service technician has used replacement parts specified by the manufacturer or have the same characteristics as the original part. Unauthorized substitutions may result in fire, electric shock, or other hazards.
- 23) Safety Check – Upon completion of any service or repairs to this product, ask the service technician to perform safety checks to determine that the product is in proper operation condition.
- 24) Wall or Ceiling Mounting – The product should be mounted to a wall or ceiling only as recommended by the manufacturer.
- 25) Heat – The product should be situated away from heat sources such as radiators, heat registers, stoves, or other products (including amplifiers) that produce heat.



SIX YEAR WARRANTY

HAVING TROUBLE WITH YOUR SOUND SYSTEM?

CONDITION	POSSIBLE SOLUTION
No Sound (<i>power LED off</i>)	<ul style="list-style-type: none"> • turn POWER switch ON • charge battery or plug in AC cord • safety shut down if unit overheats, turn volume lower & turn speaker ON
No Sound (<i>power LED on</i>)	<ul style="list-style-type: none"> • check for output from source • make sure all cables are completely plugged in • turn up volume control of input used • remove plug from speaker output if not using external speaker output
Shortened Battery Life	<ul style="list-style-type: none"> • charge battery fully; if battery life continues to deteriorate, contact Anchor Audio customer service: 800.262.4671
Distorted Sound	<ul style="list-style-type: none"> • lower system volume control
Excessive Hum or Noise	<ul style="list-style-type: none"> • use shielded cables • use balanced microphone

HAVING TROUBLE WITH YOUR WIRELESS SYSTEM? (*Wireless Models Only*)

CONDITION	POSSIBLE SOLUTION
No Sound (<i>RX Indicator: ON</i>)	<ul style="list-style-type: none"> • set MUTE switch to on (<i>handheld mic only</i>) • turn up WIRELESS volume control • make sure mic is plugged into body pack transmitter
No Sound (<i>RX Indicator: OFF</i>)	<ul style="list-style-type: none"> • push mic power button • turn Liberty POWER switch on • make sure transmitter power switch is on • set receiver and transmitter to same channel • replace battery in transmitter

NEED MORE HELP? Liberty Platinum Sound System Setup & Operation Videos!
Visit Our Website: www.anchoraudio.com

LIBERTY PLATINUM TECHNICAL SPECIFICATIONS

Rated Power Output	125 watts AC / 100 watts DC	Mic Inputs:	Lo-Z (1 KW), balanced, XLR
Max SPL @ Rated Power	117 dB		12 VDC condenser mic
Battery	Two 12 Volt rechargeable, 9.0 AH Full recharge: approx 7 hrs.		(phantom) power
Frequency Response	60 Hz – 15 kHz \pm 3dB		Hi-Z (10 KW), unbalanced, 1/4" phone
Line Output (post fader)	isolated, 600 Ω , 1/4" phone		Hi-Z (10 KW), unbalanced, 1/8" stereo, 1/4" phone
AC Power Reqs.	100 – 240 VAC, 50/60 Hz, 300W max	Line In/Out	unbalanced, stereo RCA
DC Out	12V 500mA	Sensitivity For Rated Output	
USB	5V 500mA	Lo-Z Microphone	-52 dBV (2.5 mVrms)
Dimensions (HWD)	22" x 14" x 11.5" (56 x 35.6 x 29.2 cm)	Hi-Z Microphone	-43 dBV (7.5 mVrms)
Weight (AC/DC)	38 lbs/ 17 Kg	Auxiliary (line)	-14 dBV (200 mVrms)
Weight (AC only)	26 lbs/ 12 Kg	Phantom Power	36V



(Specifications Subject to Change Without Notice)

ANCHOR AUDIO CUSTOMER SERVICE
800.262.4671

FOR ADDITIONAL INFORMATION
visit www.anchoraudio.com