



A Message from the President

Congratulations on purchasing an Anchor Audio sound system, the choice of thousands of satisfied customers including the White House, prestigious universities, school districts nationwide, police and fire departments, and all branches of the U.S. military. Our products are made of the finest materials and built with pride in the U.S.

We've incorporated the latest technology into your sound system yet kept it simple to use. Just take a few minutes to review this manual to ensure the maximum enjoyment of your Anchor system. Or, you can view a demonstration video complete with a trouble shooting section at www.anchoraudio.com.

Feel free to call our friendly customer support staff at 1-800-ANCHOR1 Monday thru Friday between 7:00am and 5:00pm Pacific Standard Time with any questions. We love to hear from our customers.

Janet Jacobs, President
on behalf of all Anchor employees

CONTENTS

GETTING STARTED.....	1
BASIC SYSTEM OPERATION.....	2
WIRELESS REMOTE CONTROL.....	3
OPERATING THE BUILT-IN UHF WIRELESS RECEIVER	4
OPERATING WIRELESS RECEIVER/MICROPHONE.....	5
HAVING TROUBLE WITH YOUR SOUND SYSTEM?.....	6
CA-130 TECHNICAL SPECIFICATIONS.....	6

GETTING STARTED

Please check your new unit carefully for any damage which may have occurred during shipment. Each Anchor product is carefully inspected at the factory and packed in specially designed boxes for safe transport. Notify the freight carrier immediately of any damage to the shipping box or product. Repack the unit in the original box and wait for inspection by the carrier's claim agent. Notify your dealer of the pending freight claim.

NOTE: All damage claims must be made with freight carrier!

RETURNING SYSTEMS FOR SERVICE OR REPAIR

For service or repair, please contact the dealer you purchased your system from or Anchor Audio Customer Service at 800.262.4671 to obtain a RA (*Return Authorization*) number. You may also complete an online RA request form at www.anchoraudio.com. All shipments to Anchor Audio must include a RA number and must be shipped prepaid. C.O.D. shipments will be refused and returned at your expense.

IMPORTANT: Save the shipping box & packing materials, they were specially designed to ship your unit!

WARRANTY REGISTRATION

Visit our website at www.anchoraudio.com and select "Warranty Registration." Complete the online form to activate the six-year limited warranty on your CA-130 speaker monitor and two-year limited warranty for the microphones.



SIX YEAR WARRANTY

BASIC SYSTEM OPERATION

The CA-130U1 monitor is used to amplify the signal from a microphone, electronic musical instrument or line-level sources (MP3, cassette, CD, VCR, etc).

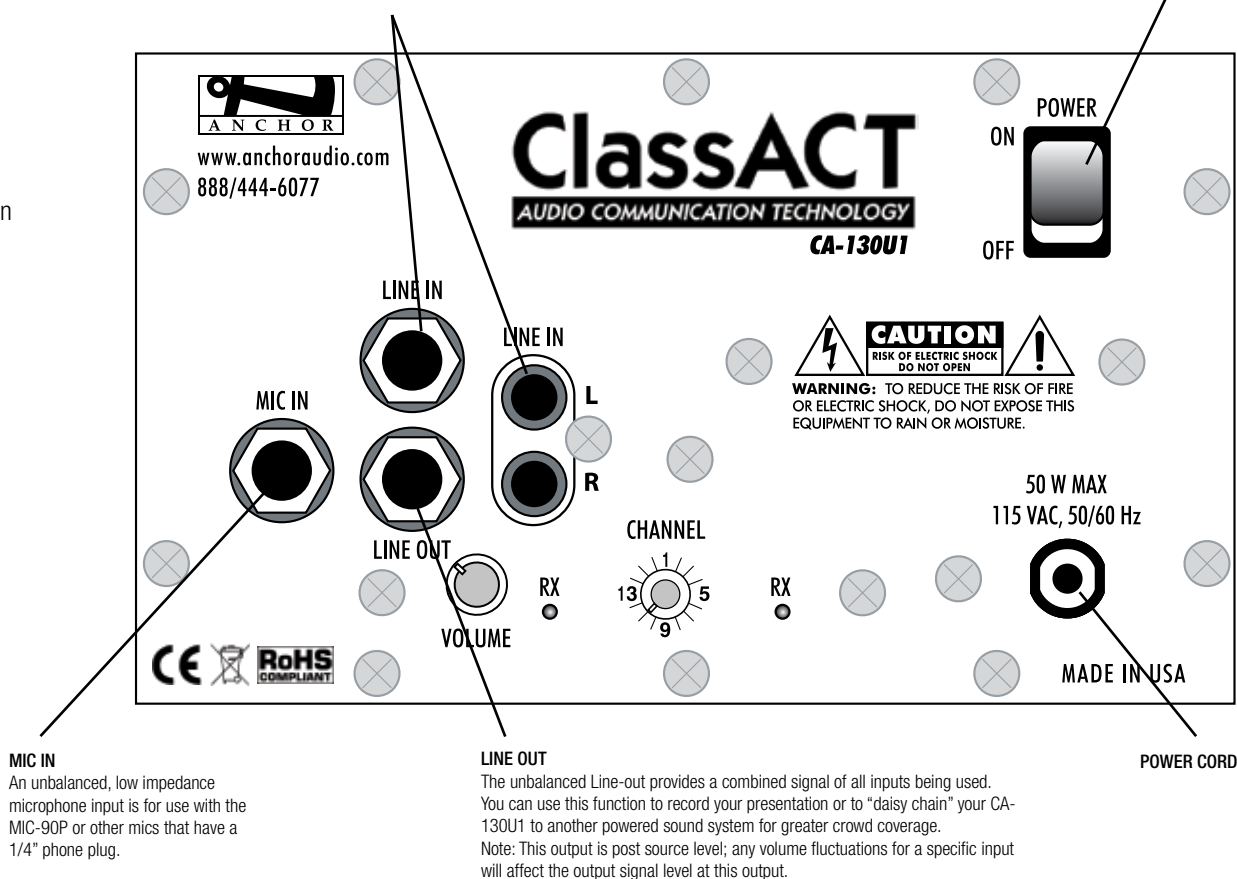
You'll need a connection cable and an AC outlet.

1. Place the CA-130U1 in desired location
2. Set volume control on front of speaker to minimum
3. Plug the power cord into a grounded 115 volt outlet (220 volt outlet for export model)
4. Plug a microphone into the MIC input jack, or an audio source into a LINE IN jack
5. Turn the power switch on the rear panel "ON" (red LED on front panel should light)
6. Adjust the volume, bass & treble controls to desired levels

IMPORTANT: To avoid feedback, do not position a microphone in front of speaker.

LINE IN

The line-level RCA input jacks may be used with audio sources such as computers, VCR's, and cassette tape or compact disc players. The inputs may be used for two separate sources, or they may be used to sum L+R stereo outputs to a mono signal without the need for adapters.



NOTE: SEE PAGE 4
FOR WIRELESS RECEIVER
INSTRUCTIONS



SIX YEAR WARRANTY

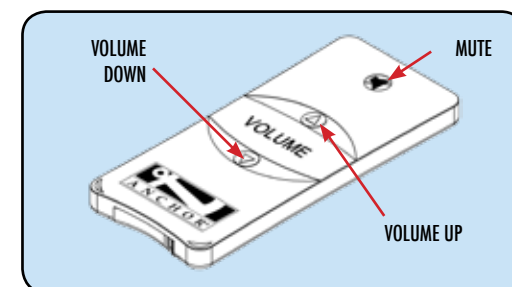


WIRELESS REMOTE CONTROL

REMOTE OPERATION (CA-130RC ONLY)

Point the red Mute button towards the front of the AN-130RC, aiming the remote at the red window located near the Volume and Tone controls.

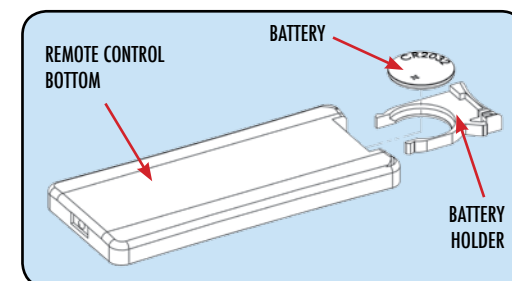
- Raise volume by pressing Volume Up
- Lower volume by pressing Volume Down
- Mute system by pressing Mute
- Stop mute by pressing Mute again or pressing either volume button



NOTE: If the system is not responding be sure the signal is not blocked.

REPLACING THE REMOTE BATTERY

1. Locate the latch on the bottom of the remote, near the back
2. Gently pull the latch towards the center of the remote
3. Slide out the battery holder carefully
4. Place a new battery in holder with positive symbol on the battery facing up
5. Carefully re-insert the battery holder



NOTE: Use only CR2025 or CR2032 type batteries.



SIX YEAR WARRANTY

DIVERSITY WIRELESS BY ANCHOR AUDIO

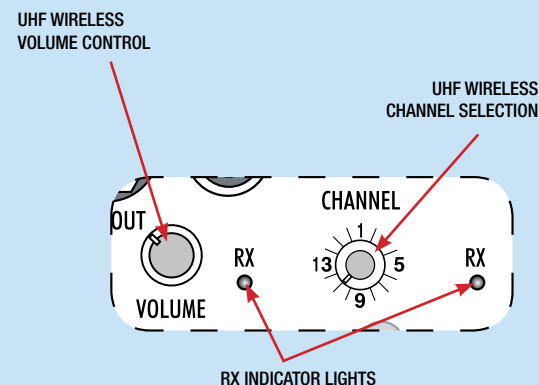
Anchor Audio UHF wireless is a 16 channel, diversity wireless system that receives signals with two independent antennae. With diversity wireless the receiver processes the stronger signal, effectively minimizing dropouts and interference from other transmitting sources. The antennae are mounted internally so there are no obstructions or risk of damage.

CHANNEL SELECTION - BUILT-IN RECEIVER

Select a channel, set the built-in receiver & microphone transmitter to that channel before using your wireless system.

1. Choose any available wireless channel/ frequency from 1 thru 16
(see page 5 for transmitter instructions)
2. Set the Wireless Channel Selector Knob to the channel/ frequency you choose in step 1

If you have two wireless receivers repeat above for the second receiver.
Remember, each receiver/transmitter pair must be set to different channels to avoid interference.



NOTE: Ongoing wireless interference? The frequency you selected may be in use by other systems in the area.
Change channels until you find a clear frequency.



CONTROLLING FEEDBACK

Feedback, a howling noise or shrill sound, is self-generated by the sound system. It's caused by a microphone picking up the sound coming from the speaker and then re-amplifying it. Once a feedback loop starts, it continues until the system is adjusted.

FEEDBACK CAUSES

- Microphone too close, pointing towards or in front of speaker
- Volume setting is too loud for room
- Sound reflecting off hard surfaces

AVOIDING & ELIMINATING FEEDBACK

- Point microphone in a different direction
- Keep microphone away from the speaker
- Place speaker in FRONT of the microphone
- Reduce the sound system volume levels

CAUTION: Feedback can damage your equipment & may be hazardous to hearing.

NOTE: If you experience ongoing interference with your wireless system, the selected frequency may be incompatible with other systems in the area.
Try different channels to find a clear frequency.

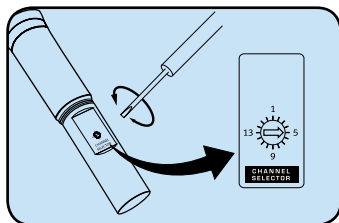


SIX YEAR WARRANTY

OPERATING THE WIRELESS MICROPHONE/TRANSMITTER

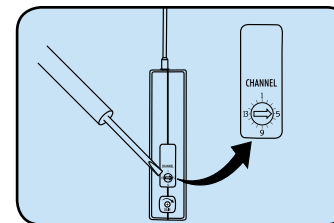
CHANNEL SELECTION - HANDHELD TRANSMITTER

1. Unscrew battery cover on bottom of microphone
2. Set the CHANNEL SELECTOR dial to match the channel setting of your receiver
3. Replace battery cover and tighten firmly



CHANNEL SELECTION - BODY-PACK TRANSMITTER

1. The channel selection dial is located on the side of the transmitter
2. Set the CHANNEL selection dial to match the channel setting of the receiver



NOTE: When using dual wireless, each microphone must be set to a different channel.

USING YOUR WIRELESS MICROPHONES

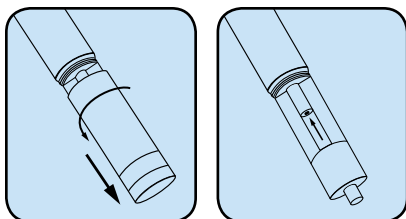
After you have set the transmitter channel (see above) you are ready to use your wireless microphone:

1. Body-pack transmitter users must insert the mic plug into the transmitter jack marked MIC
2. Turn the transmitter power switch to ON
(The red LED will flash when the mic is turned on. If the red LED stays on, the battery is low)
3. Turn the CA-130 power switch to ON
4. The RX indicators will light *(only one indicator will light at a time)* when the wireless signal is being transmitted and received

CAUTION: Harmful feedback may occur when walking in front of a sound system or speaker with a wireless microphone. Always point microphone away from speakers.

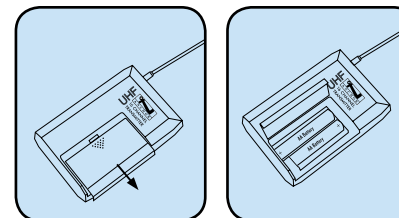
REPLACE BATTERY - HANDHELD TRANSMITTER

1. Unscrew battery cover on bottom of microphone
2. Replace old batteries with two fresh size 'AA' alkaline batteries
3. Replace battery cover and tighten firmly



REPLACE BATTERY - BODY-PACK TRANSMITTER

1. Slide open battery cover on front of transmitter
2. Replace old batteries with two fresh size 'AA' alkaline batteries
3. Replace battery cover by sliding firmly into place



NOTE: Transmitter power must be OFF when changing batteries.



SIX YEAR WARRANTY

HAVING TROUBLE WITH YOUR SOUND SYSTEM?

CONDITION	POSSIBLE CAUSE
No Sound (<i>Power LED 'off'</i>)	<ul style="list-style-type: none"> • turn POWER switch 'on' • plug in power cord into power source
No Sound (<i>Power LED 'on'</i>)	<ul style="list-style-type: none"> • check for output from source • make sure all cables are completely plugged in • turn VOLUME knob (<i>front panel</i>) clock-wise to increase level • press 'mute' button on remote control only with CA-130RC • turn POWER switch 'off' then back 'on'
Distorted Sound	<ul style="list-style-type: none"> • check input cable connection • lower input signal level
Excessive Hum or Noise	<ul style="list-style-type: none"> • use shielded input cables
No Sound From Wireless	<ul style="list-style-type: none"> • confirm transmitter POWER switch is 'on' • turn wireless VOLUME knob (<i>back panel</i>) clock-wise to increase level • plug hands free microphone into body-pack transmitter • turn sound system POWER switch 'on' • replace batteries in wireless mic/transmitter • press MUTE button on remote control to turn off mute
Frequent Transmitter Dropouts	<ul style="list-style-type: none"> • replace batteries in wireless mic/transmitter • move wireless microphone/transmitter closer to CA-130U1 • change transmitter to different channel



Scan for ClassAct
Technical Specs



Scan for ClassAct
Website



Scan for How to
Videos & Articles

CA-130U1 TECHNICAL SPECIFICATIONS

Rated Power Output	30 watts	Inputs	
Max SPL @ Rated Power	101 dB @ 1 meter	Line (2)	Hi-Z, unbalanced, RCA (sum L+R)
Wireless Antenna Range	30 feet / 9.14 meter	Microphone	Lo-Z, unbalanced, 1/4" phone
Frequency Response	65 Hz – 18 kHz \pm 3 dB	Output	
Speaker Type	4.5" woofer, 10 mm dome tweeter	Line	Lo-Z, buffered, 1/4" phone
AC Power Reqs.	110 – 125 VAC, 50/60 Hz	Sensitivity For Rated Output	
Export Model	208 – 240 VAC, 50/60 Hz (50W max)	Line	-20 dBV (100 mVrms)
Fuse Rating	T 1.0A / 250V	Microphone	-43 dBV (7.5 mVrms)
Export Model	T 0.5A / 250V (internally mounted)		
Dimensions (HWD)	5.25" x 8.4" x 9" (13 x 21 x 23 cm)		
Weight	8.5 lbs / 3.8 Kg		



(Specifications Subject to Change Without Notice)

ANCHOR AUDIO CUSTOMER SERVICE
800.262.4671

FOR ADDITIONAL INFORMATION
visit www.anchoraudio.com